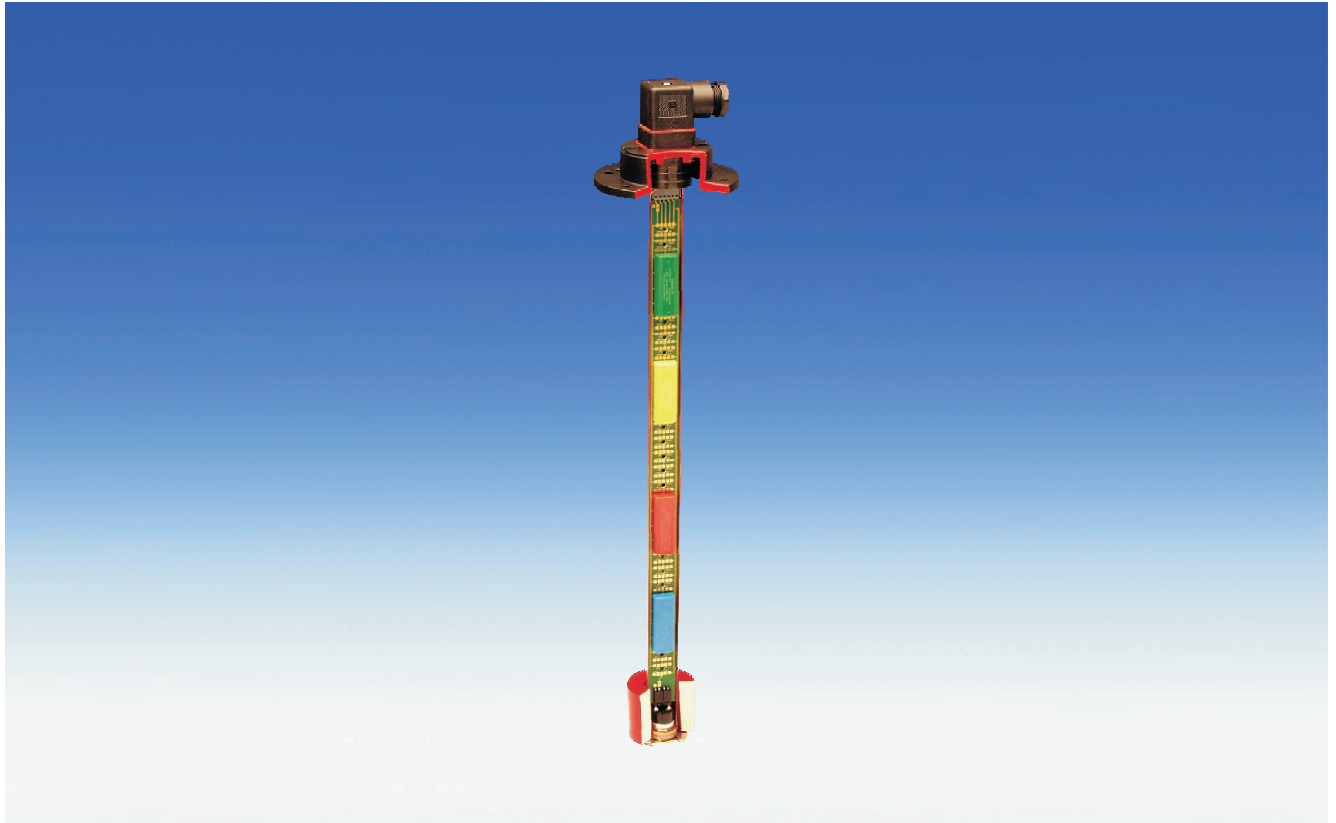


Nivotemp 64 RE

easyjust

- RENAULT specification -



The new Buhler “easyjust” system simplifies the adjustment of level contacts. The system consists of level contact cartridges that clip onto a gold plated contact board. This board can accommodate up to four contact cartridges plus the temperature control. The temperature control is a bimetal switch. Both the level contacts and the temperature control clip directly onto the contact board thus eliminating wiring.

By researching existing standards for fluid power packs including DIN 24346 regarding liquid level control, it was found that measuring to 11.81” depth was sufficient to control both level and temperature. Therefore the Buhler standard length of 14.57” is sufficient and covers most applications. Flange mounting is almost universal for breather/filler units so it is also suitable for mounting temperature and level controls.

The connection between the electrical connectors and the contact board is a quick change type making the stocking of spare parts and the adaption to specific applications very convenient.

The Nivotemp 64RE in this configuration complies with Renault requirements. It provides an M12 connector socket, preset level contacts and a stilling tube.

Please note that our product range contains more Renault specific versions of the Nivotemp and Nivovent series.

- **Combined level and temperature control**
- **Cordless adjustable level contacts**
- **Bistable level contacts = only one float**
- **High float sensitivity**
- **International standard flange dimensions**
- **Easy installation**
- **Maintenance free**
- **Standard length 14.57”**

Technical Data

Max. operating pressure	1 bar (14.5 psi)
Max. operating temperature	80 °C (176 °F)
Min. density of fluid	0.8 kg/dm ³ (0.029 lb/in ³)

Material

Float SK 610	hard PU
Switch tube	brass
Flange	PA 6

Level contacts single contact NC/NO*

Min. distance btw. contacts	1.57"
Max. voltage	24 V
Max. current	0.5 A
Max. contact load	10 VA

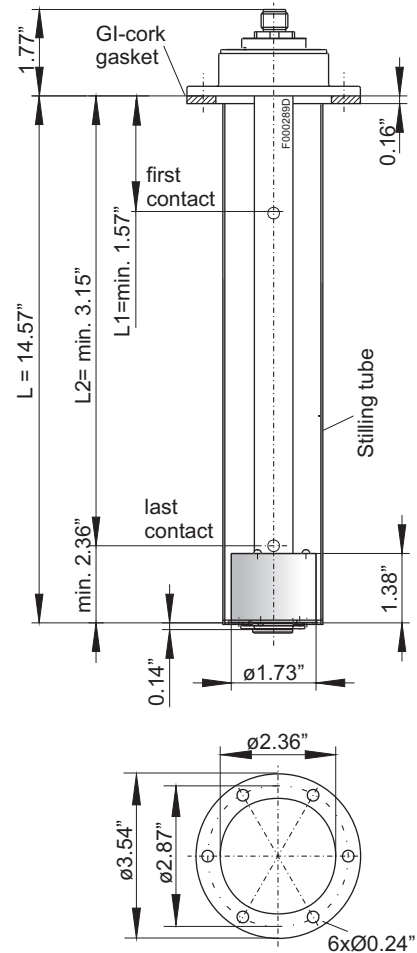
* **NC** = normally closed / **NO** = normally open, all figures at empty reservoir

Temperature contacts TK

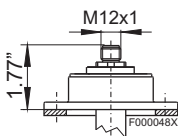
Max. voltage	24 V
Max. current	1 A
Max. contact load	24 VA
Hysteresis	10 K ± 3 K (18 °F ± 5.4 °F) (temp. difference)
Switch points	70 °C (158 °F) normally closed (NC) at rising temperature

other settings upon request

Dimensions given in inch



Connector	M12 4 pol.
Protection class	IP67**
Cable gland	PG 7** **with plug fixed



Order Information

Nivotemp 64 RE

Part-no	Connector	L =	L1=	L2=	Temperature-contact TK 1	Temperature-contact TK 2	Stilling tube
1064900101	M12	14.57"	7.87" NO*	-	T1 = 158 °F NC*	-	yes
1064900102	M12	14.57"	11.81" NO*	-	T1 = 158 °F NC*	-	yes
1064900103	M12	9.84"	7.48" NO*	-	T1 = 158 °F NC*	-	yes

* NO = normally open, NC = normally closed