

Level Control NS 61-39 D 933

- VW Specification -

Technical Data

Max. operating pressure	1 bar (14.5 psi)
Max. operating temperature	80 °C (176 °F)
Min. density of fluid	0.8 kg/dm ³ (0.029 lb/in ³)

Material:

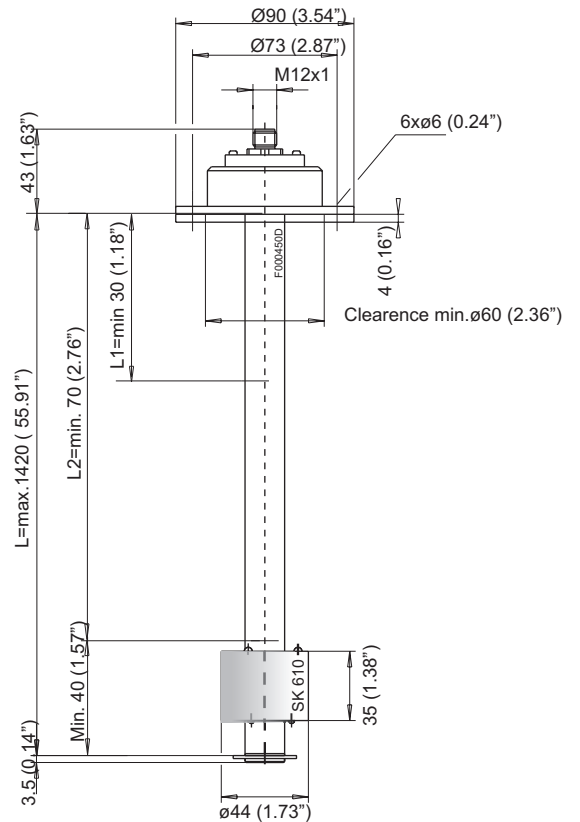
Float SK 610	hard PU
Switch tube	brass
Flange	PA 6

Level contacts

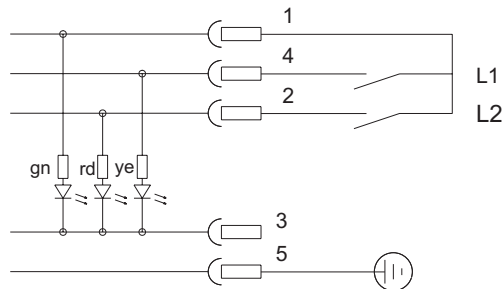
Function	K10
Function	NO
Min. distance of contact	1.57"
Max. voltage	24 V
Max. current	0.5 A
Contact load	10 VA

Connector socket

Connector socket	M12 (with female plug fixed)
Protection class	IP 67
	LED-female plug not included in delivery



Wiring diagram



All figures at empty reservoir

Order Information

Type	Part No.	L	L1	L2
NS 61-39 D 933	10101399	Variable	Variable NO*	Variable NO*

NO = normally open

we reserve the right to amend specifications