

# Multiterminal RE

- RENAULT Specification -



Over the years the Fluidcontrolterminal has taken a very significant role in condition monitoring of fluid power systems.

Based on the experience with this combined unit, Bühler is introducing a more advanced product with a greater integration of functions.

The Multiterminal RE integrates the function of a tanktop return-line filter with advanced two-stage capacity monitor and filling port.

The design allows easy configuration for individual applications. The Multiterminal consists of a cast aluminum baseplate with integrated return-line filter head. The head offers three different G 1 inlet ports situated 90° and in addition an G 1/2 filling port. Also a port for a cartridge valve is provided where automated filling is required. Two sample ports are provided for alternate use plus one sample port in the return line.

The base plate has an interface flange according to DIN 24550/T2. The flange can take any suitable breather filter or can be equipped with Nivovent units from either series 7 or 8. These units feature a qualified breather filter with integrated level controls and temperature display plus controls as an option.

- **Combination of:**
  - **Breather,**
  - **Level- and temperature control,**
  - **Return-line filter with capacity indicator,**
  - **Sample ports for reservoir and return line,**
  - **Filling port**
- **Return-line filter with filter element 10µm according to DIN 24550**
- **International standard flange DIN 24557, part 2 integrated in base plate**
- **Compact dimensions**
- **Easy installation**
- **Modular design**

## Technical Data

Operating pressure (Return-line) max 10 bar  
 Operating temperature max. 80°C

### Material

Base plate GK-AISI12  
 Gasket GI-cork  
 Filter cap and -housing plastic

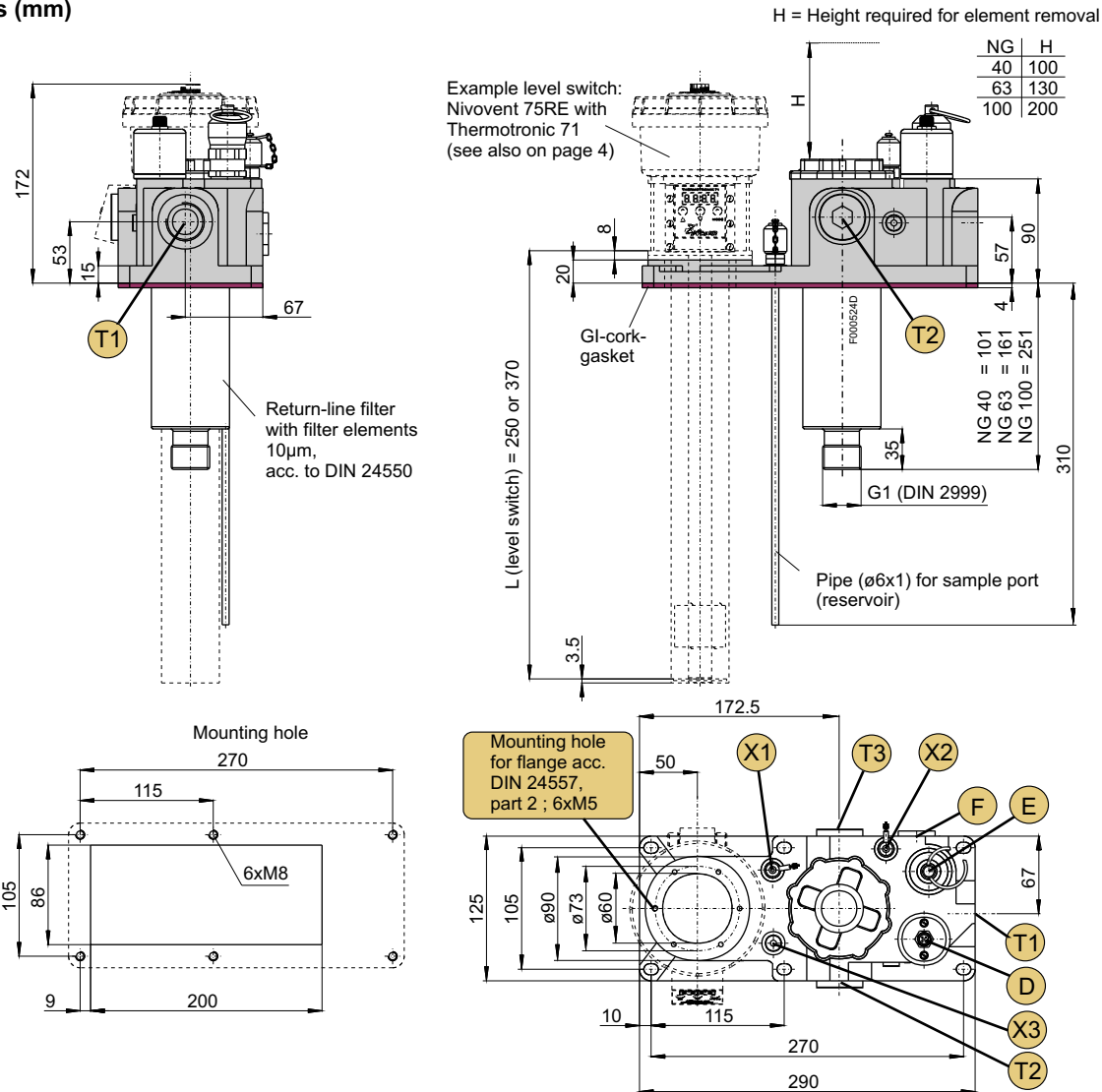
### Filter Data

Opening pressure bypass  $\Delta p$  3.5 bar  $\pm 10\%$   
 Nominal size NG 40, NG 63 or NG 100  
 Filter element according DIN 24550 10  $\mu m$

### Weight

Multiterminal without level switch 3.5 kg (NG 100)

## Dimensions (mm)



### Note:

The return-line filter is part of the basic unit and available in the sizes NG40, NG63 and NG100.

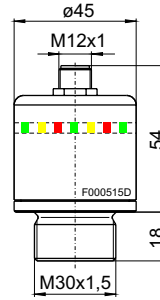
### Placement of Connections:

- D = Capacity indicator, Bühler VSA 24-SM-2,2/2,9
- E = Filling port G1/2, Stäubli SBA 11/CN
- F = Sealing plug
- T1 = Connection G1 for return-line filter
- T2 / T3 = Sealing plug G1 (alternative connection for return-line filter, connection T1)
- X1 = Sample port G1/8, mini-mess with pipe for probe reservoir
- X2 = Sample port G1/8, mini-mess for probe return-line
- X3 = Sealing plug G1/8 (alternative connection for X1)

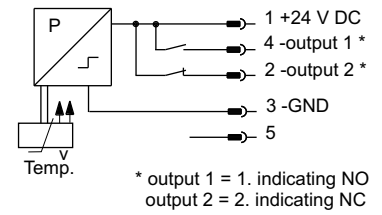
(The connections at T1, T2 and T3 as well as X1 and X3 may be configured by the customer.)

### Connection D - Capacity Indicator

<b>Model</b>	<b>Bühler VSA 24-SM-2,2/2,9</b>
	- self-monitoring -
Max. voltage	24 V DC
Max. current	1 A at 24 V DC
Max. operat. pressure	10 bar
Indication	electric / visual (light-em. diodes)
1. indicating (forewarn)	2.2 bar
2. indicating (shutoff)	2.9 bar
Operating temperature	0 to + 85°C
Cold start suppression	from 30°C (medium temperature)
Connector	M12x1, 5-pol. (without plug)
Protection class	IP67 (with plug fixed)
Material	Al / PC

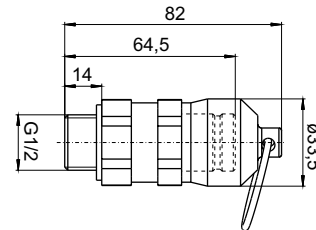


### Wiring diagram



### Connection E - Filling Port

<b>Model</b>	<b>Stäubli SBA 11/CN</b>
	(plug)
Nominal size	11
Connection	male thread G 1/2
Material	chromsteel / hardened steel



## Ordering Information

Basic unit Multiterminal comprising of:  
base plate, plate gasket, connections configured as described on page 2  
and

return-line filter  
with filter-element 10µm

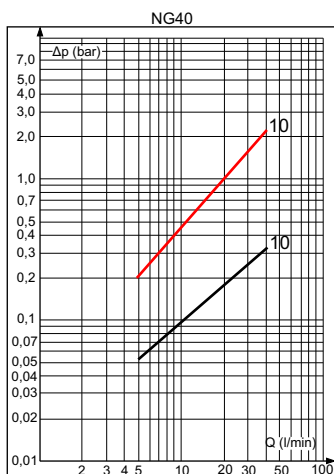
### Multiterminal RE

<b>Part-no.</b>	<b>10018199RE</b>	<b>10018299RE</b>	<b>10018399RE</b>
-----------------	-------------------	-------------------	-------------------

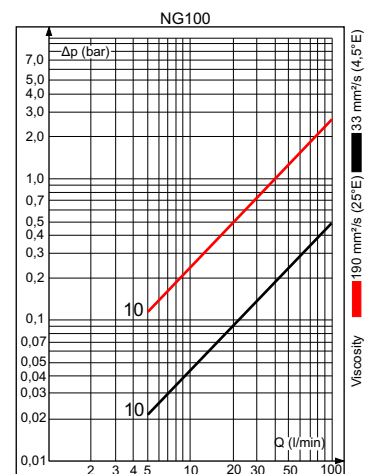
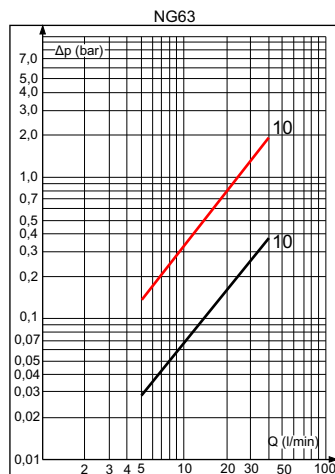
### Accessories / Spare Parts: DIN-filter element 10µm

<b>Model</b>	<b>NG 40</b>	<b>NG 63</b>	<b>NG 100</b>
<b>Part-no</b>	<b>N 0040 RN 10</b>	<b>N 0063 RN 10</b>	<b>N 0100 RN 10</b>
	<b>1001004010</b>	<b>1001006310</b>	<b>1001010010</b>

### Flow rate/pressure drop curve compl. filter



F000525X



## Level Switches acc. to Renault Specification

Nivovent 75 RE 18  
L = 250  
Part-no: 1075900118

Nivovent 75 RE 13  
L = 370  
Part-no: 1075900113

Tecnical data: see data sheet DE 10 0061

Nivovent 85 RE 18  
L = 250  
Part-no: 1085900118

Nivovent 85 RE 13  
L = 370  
Part-no: 1085900113

Tecnical data: see data sheet DE 10 0062

